



**GIFTED RESOURCES NEWSLETTER
APRIL 2010 NO 1**

INDEX

Gifted Resources News	1
The In Tray	2
Dr Gail Byrne	3
Parent Support Groups	4
GSN Guest Pat Slattery	6
11 th Asia Pacific Conference	7
Rural Scholarship	7
OGTOC	8
GERRIC	8
Interesting websites	10
Subscription information	12
Disclaimer	12

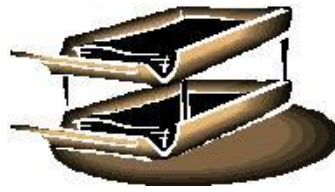


**PO BOX 4176
CROYDON HILLS
VIC 3136**

Gifted Resources News



The joy of giving lies in seeing the benefit and delight the gift brings to the recipient but it is also lovely to receive thanks.



WHAT'S IN THE IN TRAY?

These items have been received recently and can be found in the In Tray which is located on the Home page of Gifted Resources Website www.giftedresources.org The links in the newsletter are not live – please go to the In Tray to access them

If you would like information included in the newsletter and/or the In Tray please send to contributions@giftedresources.org

SCRATCH DAY 22 May 2010 [WEBSITE](#)

GIFTED SUPPORT NETWORK Guest Speaker Pat Slattery 25.05.2010 [FLYER](#)

TOURNAMENT OF MINDS Tom Ryan Thinkers keys PD 28.05.2010 [FLYER](#)

GERRIC PARENT WORKSHOP MELBOURNE 29-30 May 2010 [WEBSITE](#)

BILLANOOK DIMENSIONS Guest Speaker Jo Freitag 8 June 2010

COMPUTER GAMES BOOT CAMP MONASH UNIVERSITY 3-9 July 2010 [WEBSITE](#)

GERRIC PROGRAMS [WEBSITE](#)

Poppyseeds and Small Poppies: 5 - 6 July 2010

Junior Scientia and Scientia Challenge: 8-9 July 2010

Scientia Challenge RESIDENTIAL: 7-9 July 2010

LA TROBE UNIVERSITY, BENDIGO Able Learners' Enrichment Program Friday 9th July, 2010 [WEBSITE](#)

11th ASIA PACIFIC CONFERENCE GIFTED 2010 SYDNEY 29 July - 1 August 2010 [WEBSITE](#)

CHIP GEELONG PARENTS GROUP A G M Wednesday 4 August 2010

GIFTED RESOURCES Guest Speaker Alison Brown 27 August 2010

GERRIC PARENT WORKSHOP SYDNEY 4-5 September 2010 [WEBSITE](#)

GIFTED RESOURCES Guest Speaker Emma Donaldson 10 September 2010

AUSTRALIAN GIFTED SUPPORT CENTRE Harry P and the Professors Hogwarts in Melbourne

Gifted Camp 15-17 October 2010 [FLYER](#)

**11th International Conference of The Mathematics Education into the 21st Century Project
Turning Dreams into Reality: Transformations and Paradigm Shifts in Mathematics Education
Rhodes University, Grahamstown, South Africa September 10– 16, 2011 Preliminary
Announcement and Call for Papers [FLYER](#)**

JUNE

GUEST SPEAKER

DR. GAIL BYRNE

YOU HAVE AN ASSESSMENT - WHAT HAPPENS NEXT?

Friday 18 June 2010

7.00pm for 7.30pm start

Centre for the Exceptional Learner Luther College Plymouth Rd Croydon Vic 3136

Cost: \$20.00

Having had an assessment of your child you should now have a report which contains some educational recommendations.

What do you do with that report?

To whom do you hand the report?

What can you expect from the school if you hand them the report?

When is acceleration (grade advancement) likely to be considered an option by a school?

How do schools view it? How can you achieve it if it is considered appropriate for your child?

What is an IEP or ILP – does your child need one?

Dr Gail Byrne

As a psychologist Gail operates a private consultancy specialising in the IQ assessment of children and adolescents and consults to a number of schools about their testing programs and the identification and management of exceptional children who may be challenging and complex and need individual education programs developed.

Gail's involvement in the gifted field started some 20 years ago. She has been involved with the CHIP Foundation since 1989 and was elected Chairperson in 2001, a role she still holds.

After completing a Master of Education (1992) in curriculum differentiation, and a Graduate Diploma in Counselling (1995), Gail was awarded a Doctorate in Psychology in 2002 for her research into the levels of academic achievement and underachievement in a group of 50 children with IQs ranging between 125 and 200.

Gail is sought after as a speaker on giftedness, underachievement and testing; has completed a DEET project on giftedness and has authored a number of papers on exceptional children.

As a registered psychologist, practising teacher and parent of two gifted children (now adults) she has developed a quite unique understanding of intellectual giftedness.

**TO BOOK OR FOR FURTHER INFORMATION
CONTACT GIFTED RESOURCES BY 16.06.2010**

Phone (03) 97242452

Email jo@giftedresources.org

PARENT SUPPORT GROUPS

GIFTED SUPPORT NETWORK

(Formerly Bayside Young Active Minds - BYAMS)

Active network in Melbourne's south eastern region offering the following services to families with gifted children:

- * "Mini Minds" - activities for preschoolers
- * "Primary Minds" - activities for primary school aged children and their parents
- * "Teens & Tweens" - activities for teenagers and their parents each term
- * Information evenings with expert speakers covering issues relating to the gifted
- * Daytime and evening social events for parents to share their experience of parenting the gifted child
- * Comprehensive members' library
- * Quarterly newsletter containing professional articles

For further information visit www.giftedsupport.org

or phone Carolyn (9576 5137)

P.O. Box 2808 Cheltenham, 3192

Email address is admin@giftedsupport.org

For the full program of Gifted Support Network activities see the excellent calendar of events at

<http://www.giftedsupport.org>

'THE BIG BANG COFFEE CLUB'

The Big Bang Coffee Club meets on the first Monday of the month at 9.30am (School and Public Holidays excepted) at:

The Coffee Club

Shop 49-50

Moonee Ponds Central

14-16 Hall Street

Moonee Ponds

3 hours of free undercover parking is available in the Moonee Ponds Central car park

Contacts:

Sally-Ann Free

sallyann.free@live.vu.edu.au

Mobile 0425 779 829

Tina McCarthy

tina@tinamccarthydesign.com

BIG BANG COFFEE CLUB

Mini/Primary Minds group

For details contact

Melissa Conley Tyler

m.conleytyler@gmail.com

mobile 0409 765 787

MAROONDAH GIFTED CHILDREN'S PARENTS' ASSOC.

Morning Coffee at MacDonald's, Maroondah Hwy. Croydon Vic. at 10.30 am on the first Wednesday of the month

Postal address:

c/- 13 Heathwood St

Ringwood East Vic 3135

Contact Jennifer Grant

Phone 9779 4218

ijgrant@optusnet.com.au

Louise Howe Phone 9801 2912

louise_h@tpg.com.au

CHIP GEELONG

CHIP Family Support Group Geelong

Contact

Meg Kinsley email Kingsleys@optusnet.com.au

Bass Coast/South Gippsland shire, Phillip Island, Wonthaggi area

Megan Leigh would like to connect with other parents of gifted children in the Bass Coast/South Gippsland shire. Phillip Island, Wonthaggi area who would be interested in getting together for a network

Contact Megan Leigh

PO Box 906

Cowes, 3922

Phone (03) 5672 3336

Mobile 0411 469 759

email indigo2crystal@yahoo.com.au

Casterton and district area

Catriona Hill would like to connect with other parents of gifted children in the Casterton and District area

Contact : Catriona Hill

Phone (03)55812529

Mobile 0419008734

Email: antrim@netspace.net.au

Web: <http://au.groups.yahoo.com/group/tallpoppysyndrome/>

GIFTED RESOURCE AND INFORMATION GROUP - CASEY/CARDINIA

For families with gifted children in Casey/Cardinia

Meets at Maranatha Christian School Rix Rd, Officer.

Contact

Victoria Poulos

Phone 0420 286 307

Email victoriapoulos@gmail.com

Email victoriapoulos@gmail.com

VICTORIA / NEW SOUTH WALES

[NSW ASSOCIATION FOR GIFTED & TALENTED CHILDREN ALBURY/WODONGA SUPPORT GROUP](#)

Meets bi-monthly in Wodonga, Victoria, and welcomes parents & teachers of gifted children

For information contact

Secretary, Cathy Baillie (02) 6021 5913

Phone: 02 60215913

Assistant Secretary, Jeannie Bowen (02) 6021 2073

website link <http://www.nswagtc.org.au/albury-wodonga>



GIFTED SUPPORT NETWORK

www.giftedsupport.org

Presents

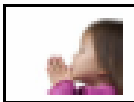
Pat Slattery

Dip. Teach. B.Ed. B.Theol. COGE, AMACEL, MHQS

“What do you mean by the Sensitive Gifted Child?”

Tuesday 25 May, 2010, 7.45 - 9.30pm

Often you can see the reaction when a parent says “My child is very sensitive”.
“ Yeah! Yeah! They all say that”. So what do we mean? It’s not that simple for the gifted.



- Physically sensitive-sight, hearing, taste, smell, touch
- Emotionally sensitive-love, kindness, hate, violence, abuse
- Allergic- pollen, foods, chemicals, eggs, peanuts, asthma, ADHD
- Ethically sensitive- injustice, equity, theft, lies,
- Highly Empathetic- can stand in the victim’s shoes
- Intuitive – deep knowledge beyond the facts
- Spiritual – interest in death, God, eternity, peace, love, cruelty
- Introverted- likes to be alone and have time to deepen thinking
- Integrity- self image as perfect can’t be negated or let down.
- Artistic – bodily feeling expressed in art , craft, dance or music.

Dealing with sensitivity can be one of the most challenging issues for the gifted child and their parents and teachers. Pat has many years of experience with gifted children and will share her wealth of knowledge on this topic.

No prior knowledge expected

School personnel and parents are encouraged to attend.

**Venue: Southern Community Church of Christ,
Corner Chesterville Rd & Pine St, Cheltenham (Mel ref 86 J1)**

Cost: \$5 members, \$10 non-members,

Bookings essential (payment on the night)

RSVP by email admin@giftedsupport.org

or phone Louise 9578 8068 (after 6pm)

11th Asia Pacific Conference on Giftedness

<http://www.gifted2010.com.au/>

The theme for the conference in Sydney in 2010 is
"Thinking Smart: Effective partnerships for talent development".

The conference will feature the **Think Bank Workshop, Think Bank Program** and **Youth Summit**. This event provides the opportunity for educators, professionals, students and parents to gather for meaningful discussion, exchange ideas and opinions and learnings through plenary sessions and workshops

The program outline can be downloaded at http://www.gifted2010.com.au/wp-content/uploads/gifted_2010_program_outline12.pdf

In conjunction with the Conference, a Youth Summit will be running for gifted students in Year 5 - 12. The Innovation Generation program provides opportunities for creative and critical thinking, problem solving and team work as students listen to keynote speakers and are involved in the process of inventing. Parents (or guardians) will need to escort the students to their conference and pick them up each day (this is not a residential program). Information and a flier about this program can be found at <http://www.gifted2010.com.au/youth-summit/> Students will be travelling from a number of Asian countries to attend this Youth Summit and organisers are also hoping to encourage groups of students from each of the states to attend. It would be a wonderful opportunity for gifted students to meet and work with like minds.

Helen McGowan
WSM for GIFTED 2010
11th Asia Pacific Conference on Giftedness
Australian Association for the Education of the Gifted & Talented
Tel: 03 9645 6311
Email: helen@wsm.com.au

MACPHERSON SMITH RURAL FOUNDATION YOUTH LEADERSHIP SCHOLARSHIP PROGRAM

Applications are presently being sought for these tertiary study scholarships. Each is worth \$15,000 per year, for three years, commencing 2011. They are being offered to young Victorians (2010 YEAR 12) from rural and regional areas who are keen to further their studies are interested in pursuing and growing their leadership interests and plan to eventually return to a rural or regional community.

For further details, contact David Hatherell on 0419 560 753, visit THE website at <http://msrf.org.au/>, or email them at dhatherell.msrf.org.au
Applications close on May 31, 2010.

A message to all members of Gifted - OGTOC

Dear OGTOC list members - new and long time members,

NING has decided to phase out their free networks so OGTOC will be moving

Please join [OGTOC - Our Gifted Online Conferences on Facebook](#)

Facebook will have a [Group page](#) and a [Fan page](#) for OGTOC - Our Gifted Online Conferences, please join, both or one, however best it suits your needs.

[Please know that you can also follow OGTOC Our Gifted Online Conferences on Twitter](#)

In addition, I have been nurturing and creating a **2E network** on Twitter..

If you are interested in becoming your state/country representative please contact me at Sally_L@comcast.net.

Hope to see you on OGTOC - Our Gifted Online Conferences on Facebook and Twitter

Kind regards,
Sally L, Founder

FROM GERRIC

Dear GERRIC friends,

Application forms for the July Student Programs are now available via our website:
<http://gerric.arts.unsw.edu.au/students/brfrm.html>

Get your forms in as soon as possible as places are limited.

Dates of workshops:

Poppyseeds and Small Poppies: 5 - 6 July

Junior Scientia and Scientia Challenge: 8-9 July

Scientia Challenge RESIDENTIAL: 7-9 July

Further information and workshop descriptions:

<http://gerric.arts.unsw.edu.au/students/wrkshps.html>

Applications should be in by: *17th May 2010*

Looking forward to seeing you at our July Student Programs!

Kind Regards,
The GERRIC Student Programs team

PARENTS:

GERRIC will once again be hosting its weekend courses for parents of gifted children in 2010.

Dates: Melbourne 29-30 May and Sydney 4-5 September

REGISTER and further details: http://gerric.arts.unsw.edu.au/prnt_yrch.html

GERRIC's Certificate of Gifted Education (COGE)

Want to enrol in UNSW's Certificate of Gifted Education midyear rather than having to wait till 2011? Now's your opportunity – but don't delay because this is a limited intake!

<http://gerric.arts.unsw.edu.au/>

GERRIC's Certificate of Gifted Education (COGE) is one of Australia's most successful and prestigious professional development programs for teachers. GERRIC (Gifted Education Research, Resource and Information Centre at The University of New South Wales) is offering mid-year places in COGE Online for commencement in June 2010. You can study Strands 1 and 2 online in June-August, come to Sydney for face-to-face participation in Strands 4 and 5 in the week of September 27- October 1 and complete Strand 5 on-line in the first few months of 2011.

“COGE on-line gives teachers enormous flexibility without compromising the outstanding quality of teaching and learning that COGE has offered each year,” says Dr Miraca Gross, Professor of Gifted Education at the University of New South Wales and Director of GERRIC. “Teachers can study in their own homes at times that suit them – and still interact with world leaders in gifted education.”

GERRIC is offering this special mid-year intake opportunity due to the overwhelming response we have received from our January on-line enrolment. But don't delay: Applications open **NOW** and close on May 16 2010.

World leaders in gifted education who teach face-to-face and on-line in COGE 2010 include Professor Joyce VanTassel-Baska of the College of William and Mary in Virginia, Professor Lannie Kanevsky of Simon Fraser University in British Columbia, Professor Susan Assouline of the University of Iowa, Professor Steve Hoover of the St Cloud State University in Minnesota and Professor Miraca Gross of UNSW who will teach in each of the five strands of COGE.

For more information or to download an application visit our website

OR

Contact Jennifer Eaton on (02) 9385 1979 or email j.eaton@unsw.edu.au

Gifted Education Research, Resource and Information Centre
The University of New South Wales
UNSW SYDNEY NSW 2052
PH: (02) 9385 1972
FAX: (02) 9385 1973
WWW: <http://gerric.arts.unsw.edu.au>

SOME INTERESTING WEBSITES

At home astronomy

<http://cse.ssl.berkeley.edu/AtHomeAstronomy/index.html>

Astronomers without borders

<http://www.astronomerswithoutborders.org/>

She is an astronomer

<http://www.sheisanastronomer.org/>

Mark Collard blog

<http://inspireyourgroup.com/blog/>

Barefootwriter blog – Why Gifted Education can't go away

<http://www.barefootwriter.com/?p=109>

NSW Public Schools Opportunity Classes

<http://www.schools.nsw.edu.au/learning/k-6assessments/ocplacement.php>

Gifted Resource Center of New England

<http://www.grcne.com/aboutus.html>

National Education Association The twice exceptional dilemma

<http://www.nea.org/assets/docs/twiceexceptional.pdf>

Indecent exposure Does the media exploit highly gifted children?

http://www.hoagiesgifted.org/indecent_exposure.htm

Blog entry drezac Adventures in Ed Tech The Phenomenon Effect

<http://www.drezac.com/2010/03/phenomenon-effect.html>

Davidson Institute Social networking – Impacting the world of Gifted Education

http://www.davidsongifted.org/db/Articles_id_10563.aspx

Cherice's Pieces blog

<http://chericespieces.blogspot.com/2010/03/giftedness-in-adults-post-in-process.html>

Free 33 page guide – Google for teachers

<http://www.freetech4teachers.com/2010/03/free-33-page-guide-google-for-teachers.html#>

Queensland Strategies for gifted children

<http://www.mysunshinecoast.com.au/articles/article-display/strategies-for-gifted-children--a-rising-tide-to-lift-all-ships,16620>

Infinite Thinking Machine blog

<http://www.infinitethinkingmachine.org/>

Awesome stories History

<http://www.awesomestories.com/history>

Review Jodi Picoult's novel House rules

http://www.boston.com/ae/books/articles/2010/03/04/jodi_picoults_latest_novel_follows_a_teen_murder_suspect_who_has_aspergers_syndrome/

Vision Therapy

<http://www.nytimes.com/2010/03/14/magazine/14vision-t.html?pagewanted=1&tnemail0=y&emc=tnt>

Our Ellipses

<http://www.ourellipses.com/index.php?n=1>

Geocaching in Education ACEC 2010

<http://lisanecc.edublogs.org/2010/04/07/geocaching-in-education-acec-2010/>

Caching box

<http://cachingbox.com/index.php>

The Gifted Way blog

<http://www.thegiftedway.com/>

University of Melbourne School Mathematics Competition

<http://www.mathscomp.ms.unimelb.edu.au/>

Google tools for schools

<http://sites.google.com/site/cliotech/Home>

Exploratree Thinking guides

<http://www.exploratree.org.uk/>

Calm you kids

<http://calmyourkids.com.au/CalmYourKids.html>

Starjump Introduction

<http://www.starjump.com.au/media/Movies/Intro%20Promo%204.swf>

Michael Auden How girls & boys learn

<http://www.michaelauden.com.au/>

Jenny Lucca Lucaccept – Intercepting the web

<http://jennylu.wordpress.com/>

ACEC reflections

<http://jennylu.wordpress.com/2010/04/14/acec-2010-reflection/>

Time Lords discovered in California – New Scientist 1 April 2010 entry

<http://www.newscientist.com/article/dn18723-time-lords-discovered-in-califor>

Interdimensional Travel – Sprite's Site 1 April 2010

<http://www.giftedresources.org/jo/blog/?p=507>

SUBSCRIPTION INFORMATION

You may be receiving this newsletter because someone has forwarded their copy to you. If you would like to receive your own copy please subscribe from our newsletter website at <http://www.giftedresources.org/web/newsletter.html>

If you have been given a printout copy and would like to subscribe to the newsletter but are not able to receive email attachments you can read this newsletter online at <http://www.giftedresources.org/web/newsletter.html>
You may also access back issues of the newsletter (from January 2005), or change your subscription options, from this address.

If you have news of events, conferences, lectures, workshops, children's programmes, etc. that you would like included in our newsletter please email contributions@giftedresources.org

DISCLAIMER

Gifted Resources aims to provide information about events, services, products and websites which could be of interest. Inclusion in Gifted Resources Website, Information Pack or Newsletter does not necessarily imply any endorsement or guarantee of quality or suitability to meet your specific needs.

Kind regards, Jo Freitag

Gifted Resources
Office
The Centre for the Exceptional Learner
Luther College
Plymouth Rd
Croydon Vic 3136
Phone (03) 9724 2452
Postal address
PO Box 4176
Croydon Hills
Victoria 3136
Phone (03)8711 3630
Website www.giftedresources.org
Email Jo Freitag jo@giftedresources.org
Newsletter e-mail contributions@giftedresources.org